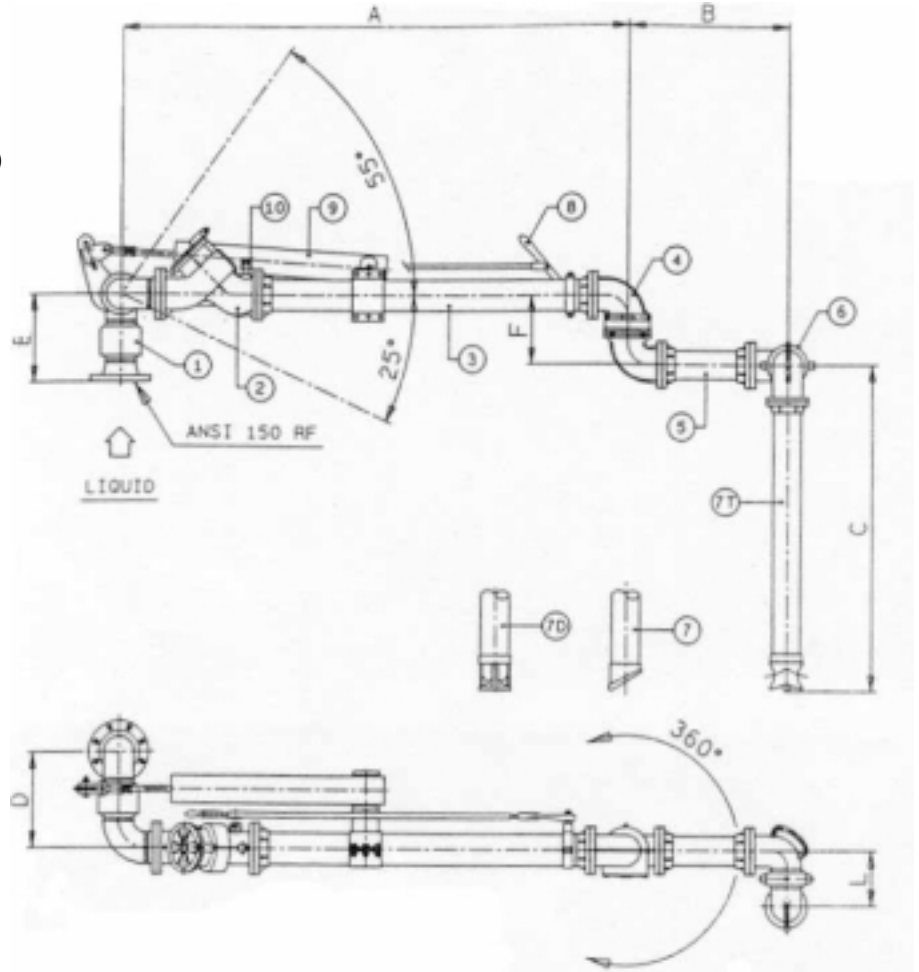


Top Loading Arm Variable Reach

Specification

Item	Description / Material
1	Double Swing Joint Carbon Steel
2	Loading Valve Aluminium (Stay or Hold Open)
3	Primary Arm Aluminium
4	Intermediate Swing Joint Aluminium
5	Secondary Arm Aluminium
6	Drop Tube Swivel Aluminium
7	Drop Tube - Outlet 45°
7T	Drop Tube - Outlet Tee (Std)
7D	Drop Tube - Outlet Deflector
	Aluminium
8	Remote Control Carbon Steel / Aluminium
9	Balance Spring Cylinder Carbon Steel
10	Vacuum Breaker Automatic Ni Plated Brass

Size : 3 and 4
 Seal Material : Viton / Nitrile
 Factory Balanced Wet condition.



Standard Right Hand Version

Standard Arm Dimensions

Size	3 Arm	4 Arm
Primary	A = 2100mm.	2100mm.
Secondary	B = 600mm.	600mm.
Drop Pipe	C = 1200mm.	1200mm.
	D = 296mm.	353mm.
	E = 289mm.	328mm.
	F = 198mm.	255mm.

Operating Conditions

Design Temp : -15° / +65°C
 Design Press : 10.5 Bar
 Test Press : 16.0 Bar

Flow Rate

3 75 mc/hr
 4 125 mc/hr

Unit Weight

3 90 Kg
 4 115 Kg

EW Fuel Management Ltd

27 Kneesworth Street, Royston, Hertfordshire,
 SG8 5AB. England.
 Tel : + 44 (0) 1763 248 650 Fax : +44 (0) 1763 248 970
 Email : sales@ewfm.co.uk
www.ewfm.co.uk

EWFM Inc.

201 Wild Berry Lane, Harvest, AL,
 35749 USA.
 Tel : 256 417 4315 Fax : 256 417 4322
 Email : sales@ewfuelmanagement.com
 Website : www.ewfuelmanagement.com