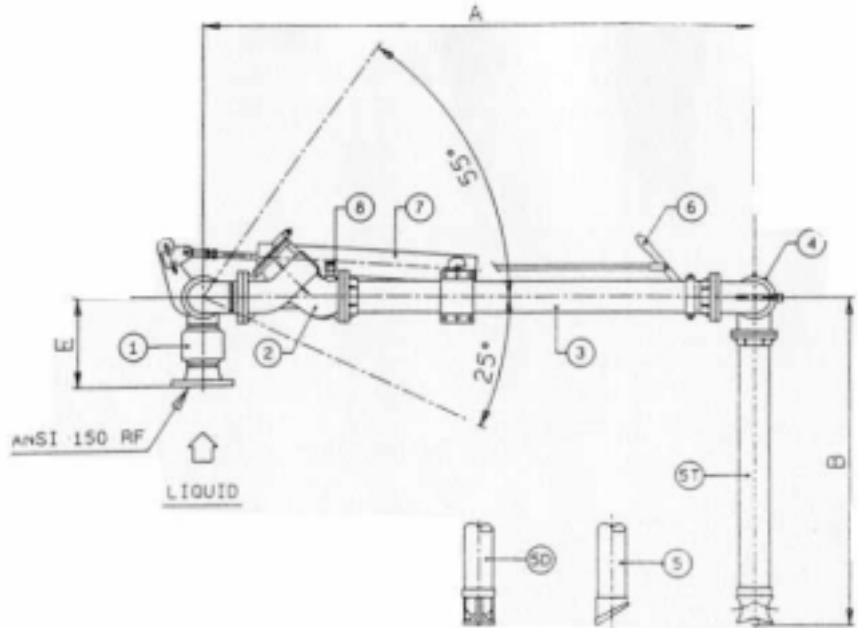


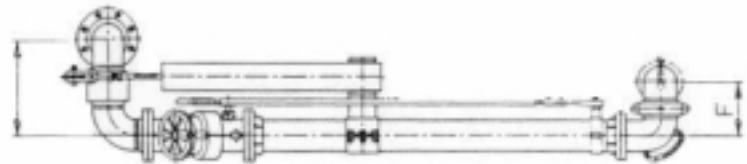
Top Loading Arm Fixed Reach

Specification

Item	Description / Material
1	Double Swing Joint Carbon Steel
2	Loading Valve Aluminium (Stay or Hold Open)
3	Primary Arm Aluminium
4	Drop Tube Swivel Aluminium
5	Drop Tube (Standard) Aluminium
5	Drop Tube - Outlet 45°
5T	Drop Tube - Outlet Tee (Std)
5D	Drop Tube - Outlet Deflector
6	Remote Control Carbon Steel / Aluminium
7	Balance Spring Cylinder Carbon Steel
8	Vacuum Breaker Automatic Ni Plated Brass



Size : 3, 4 & 6
Seal Material : Viton / Nitrile
Factory Balanced Wet condition.



Standard Right Hand Version

Standard Arm Dimensions

Size	3 Arm	4 Arm	6 Arm
Primary	A = 2100mm.	2100mm.	2100mm.
Drop Pipe	B = 1200mm.	1200mm.	1200mm.
Centres	D = 296mm.	353mm.	525mm.
Flange to Pivot	E = 289mm.	328mm.	462mm.
Centres	F = 198mm.	255mm.	278mm.

Operating Conditions

Design Temp	: -15° / +65°C
Design Press	: 10.5 Bar
Test Press	: 16.0 Bar

Flow Rate

3	75 mc/hr
4	125 mc/hr
6	280 mc/hr

Unit Weight

3	90 Kg
4	115 Kg
6	198 Kg

EW Fuel Management Ltd

27 Kneesworth Street, Royston, Hertfordshire,
SG8 5AB. England.
Tel : + 44 (0) 1763 248 650 Fax : +44 (0) 1763 248 970
Email : sales@ewfm.co.uk
Website : www.ewfm.co.uk

EWFM Inc.

201 Wild Berry Lane, Harvest, AL,
35749 USA.
Tel : 256 417 4315 Fax : 256 417 4322
Email : sales@ewfuelmanagement.com
Website : www.ewfuelmanagement.com