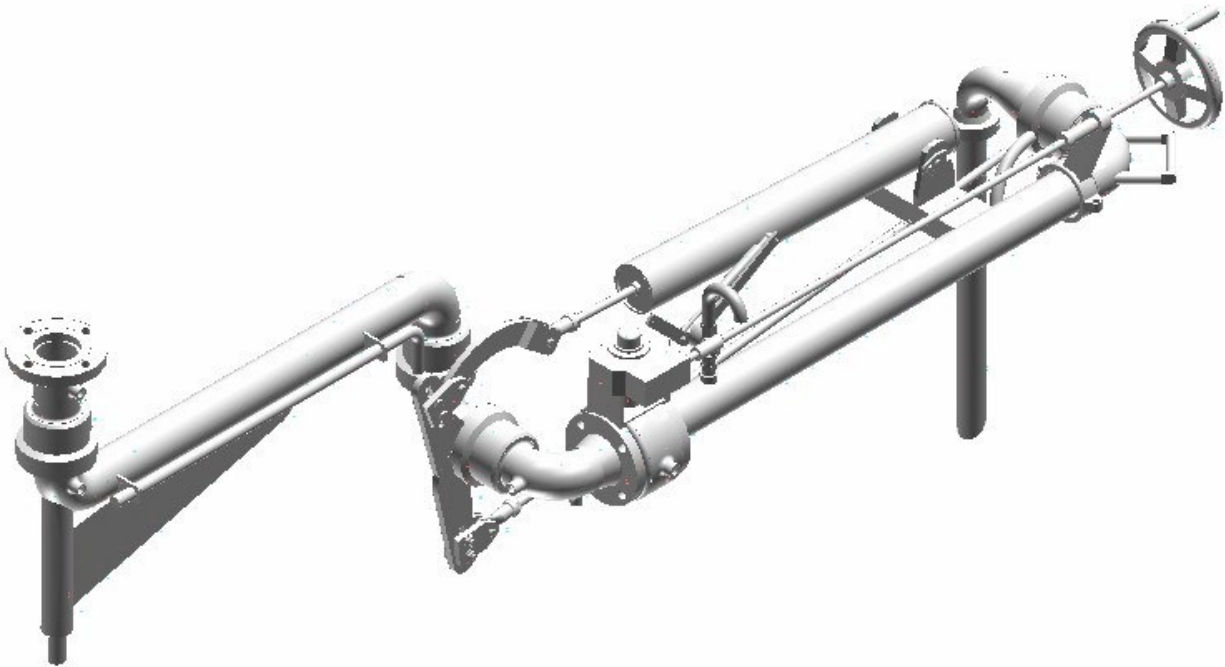


Top Loading Arm Jacketed – Model Long Reach

The long reach arm gives the greatest reach of top loading arms for transferring hot fluids such as asphalt, sulphur and bitumen and consists of a horizontal boom assembly that gives a wide range of operation on both vertical and horizontal planes. This allows truck or railcar compartments to be loaded without moving the vehicle.

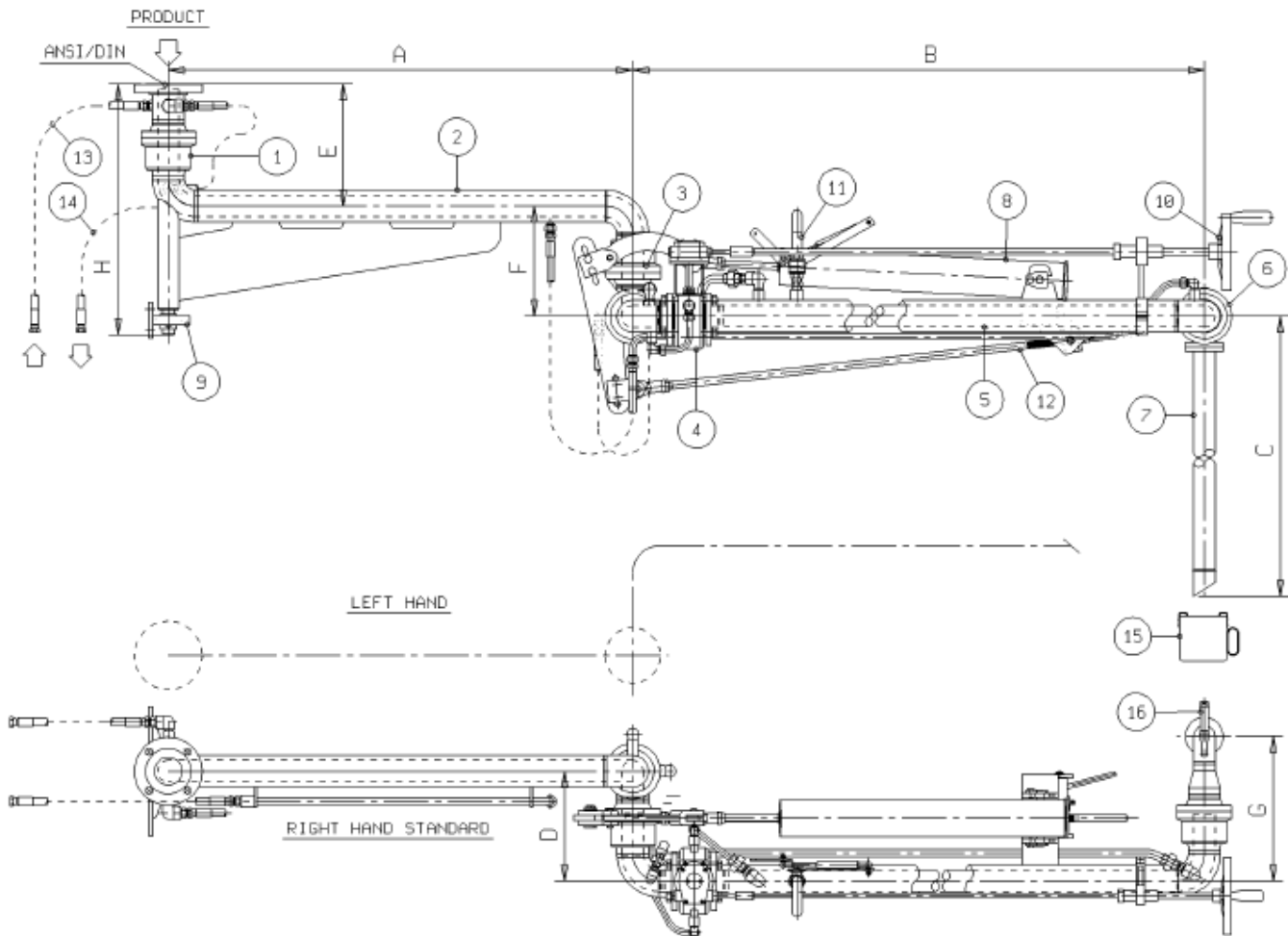
Arms for transferring hot fluids such as asphalt, sulphur and bitumen are available with either heating jackets and connection lines for steam, heating oil or alternatively by electrical tracing.

Loading Arms in various configurations are available for other products that require heating, includes foods and chemicals.



Technical enquiry form available on request.

Top Loading Arm Jacketed – Model Long Reach



Standard Dimensions			
Size	3" x 2"	4" x 3"	6" x 4"
A	1000 to 1500 mm	1000 to 1500 mm	1000 to 1500 mm
B	1500 to 2000 mm	1500 to 2000 mm	1500 to 2000 mm
C	1200 to 1600 mm	1200 to 1600 mm	1200 to 1600 mm
D	307 mm	375 mm	524 mm
E	341 mm	400 mm	550 mm
F	307 mm	375 mm	524 mm
G	404 mm	453 mm	615 mm
H	700 mm	800 mm	1000 mm
Weight	300 kg	400 kg	520 kg

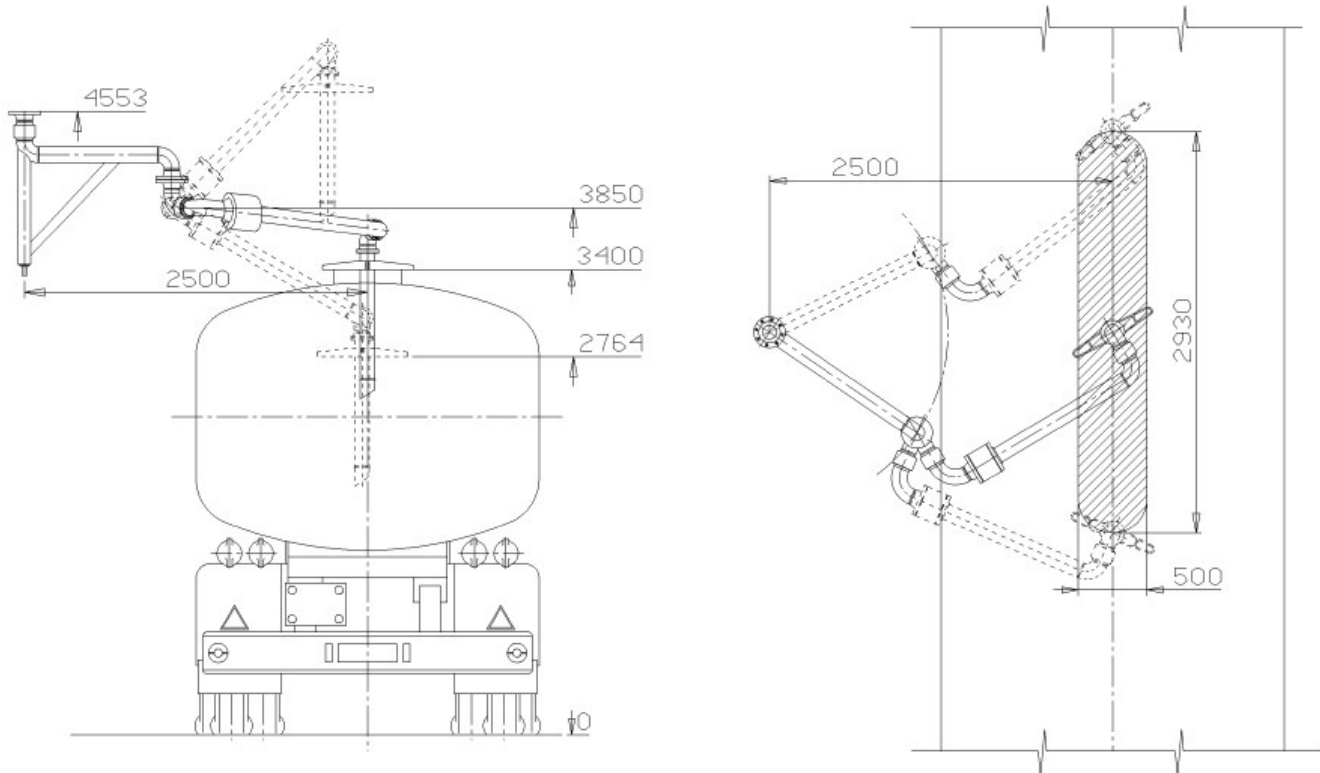
Top Loading Arm Jacketed – Model Long Reach

Parts List

Item	Description	Model Ref	Material
1	Swivel Joint – Jacketed – Style 30	2833	Carbon Steel
2	Boom Arm - Jacketed		Carbon Steel
3	Swivel Joint – Jacketed – Style 70	2833	Carbon Steel
4	Ball Valve – Jacketed – fires safe – full bore		Carbon Steel
5	Primary Arm – Jacketed		Carbon Steel
6	Swivel Joint – Jacketed – Style 40	2833	Carbon Steel
7	Drop Pipe with standard deflector	2359-BF	Aluminium Alloy
8	Spring Balance Cylinder	05182	Carbon Steel
9	Pillow Block		Carbon Steel
10	Hand Wheel – valve remote operation		
11	¾" Self-Closing Vacuum Breaker	2878	
12	Lock-Down Device	2429	Carbon Steel
13	½" Steam Hose (inlet)		AISI 321/304
14	½" Steam Hose (outlet)		AISI 321/304
15	Drip Bucket (hook on type).	2410	Aluminium Alloy
16	Operators Handle		Carbon Steel

Top Loading Arm Jacketed – Model Long Reach

Typical Operating Envelope



Operating Conditions	
Fluid	Bitumen / Sulphur
Specific Gravity (S.G)	-
Design Pressure	10.0 Bar G
Test Pressure	15.0 Bar G
Design Temperature	-15°C / +200°C

Specification	
Seal Material	Fluoroloy K
Recommended Flow Rate	3" x 2" = 35m ³ /hr max. 4" x 3" = 65m ³ /hr max. 6" x 4" = 150m ³ /hr max.
Standard Painting	Sandblast SA 2½. Primer Epoxy.